



# Allen Creek Watershed

## Conservation Practices



### Watershed Features


#### Allen Creek Basin

 5785.00 Acres

#### Allen Creek


 7.40 Stream Miles

#### Wetlands

 809.90 Acres

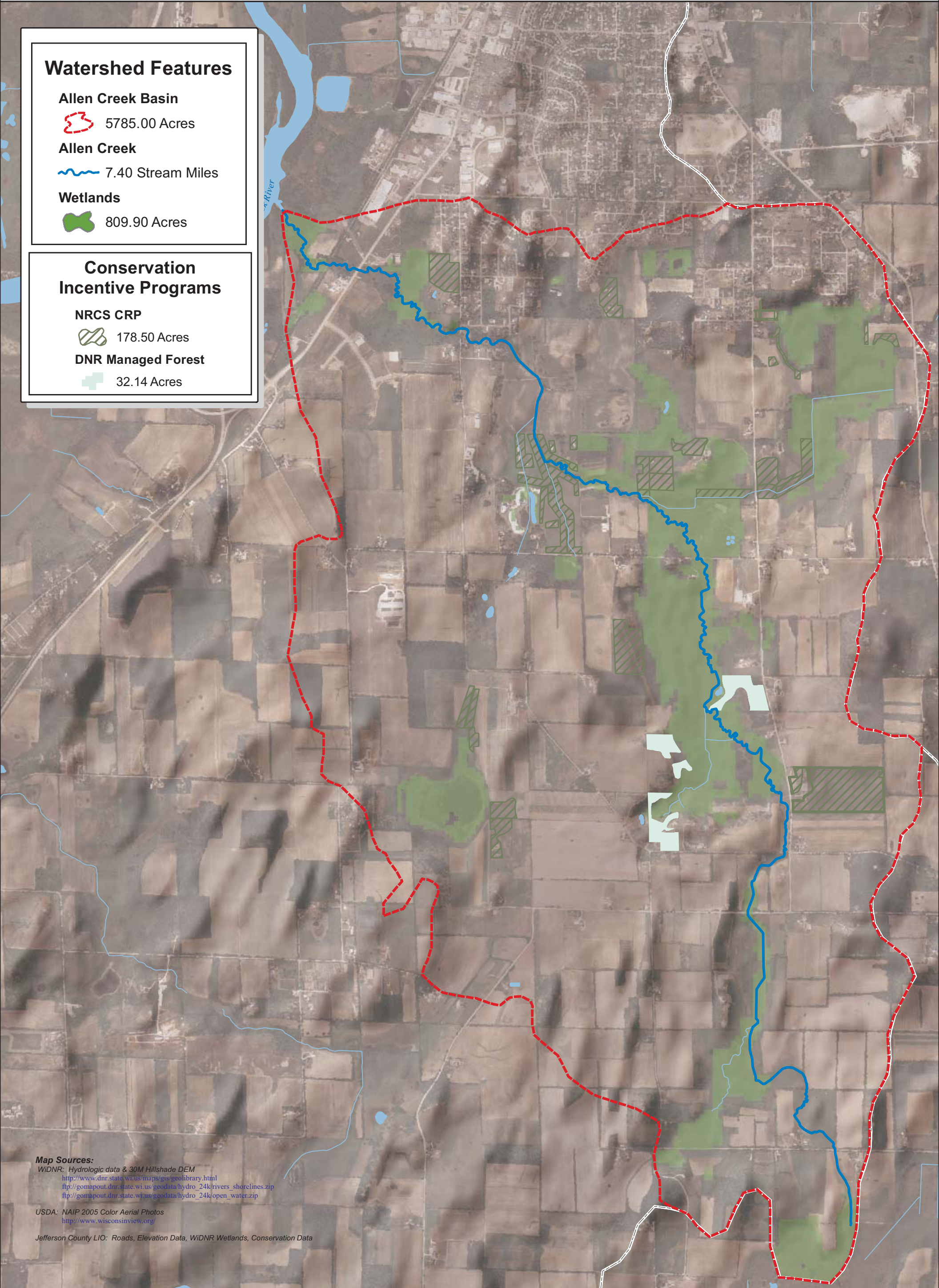
### Conservation Incentive Programs

#### NRCS CRP

 178.50 Acres

#### DNR Managed Forest

 32.14 Acres



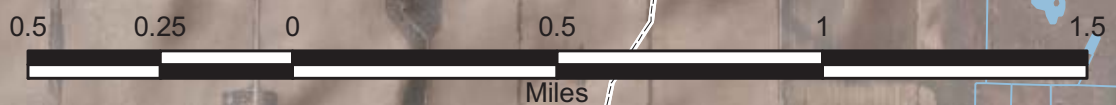
#### Map Sources:

WIDNR: Hydrologic data & 30M Hillshade DEM  
<http://www.dnr.state.wi.us/maps/gis/geolibrary.html>  
[ftp://gomapout.dnr.state.wi.us/geodata/hydro\\_24k/rivers\\_shorelines.zip](ftp://gomapout.dnr.state.wi.us/geodata/hydro_24k/rivers_shorelines.zip)  
[ftp://gomapout.dnr.state.wi.us/geodata/hydro\\_24k/open\\_water.zip](ftp://gomapout.dnr.state.wi.us/geodata/hydro_24k/open_water.zip)

USDA: NAIP 2005 Color Aerial Photos  
<http://www.wisconsinview.org>

Jefferson County LIO: Roads, Elevation Data, WIDNR Wetlands, Conservation Data

Disclaimer: This map is not a substitute for an actual field survey or onsite investigation. The accuracy of this document is limited to the quality of the records from which it was assembled. Other inherent inaccuracies occur during the compilation process. Jefferson County makes no warranty whatsoever concerning this information.



Miles